

International Journal of Advance Research in Computer Science and Management Studies

Research Article / Survey Paper / Case Study

Available online at: www.ijarcsms.com

A Geographical Study of Tourism in Panchkula District of Haryana

Sweety Devi¹

Open Scholar, MA (Geography),
Sunrise University,
Alwar, Rajasthan, India.

Reetu²

Research Scholar,
Department of Geography, MDU,
Rohtak, India.

Abstract: *Tourism plays a significant role in the economic development of regions and contributes to the preservation and promotion of local culture and heritage. This study explores the tourism potential of Panchkula District, located in the state of Haryana, India, from a geographical perspective. Panchkula District boasts a unique blend of natural landscapes, historical sites, and cultural diversity, making it an attractive destination for tourists. This geographical study aims to identify and analyze the key tourism resources in Panchkula District, including its geographical location, topography, climate, and accessibility. Furthermore, it examines the district's cultural heritage, religious sites, and historical landmarks that attract domestic and international tourists. The findings highlight the diverse tourism offerings in Panchkula District, including the Morni Hills, Sukhna Lake, and the Mansa Devi Temple. The study also examines the challenges faced by the tourism industry in the region, such as infrastructure development, environmental sustainability, and community involvement. The outcomes of this geographical study provide valuable insights for policymakers, tourism authorities, and local communities to enhance tourism planning, management, and marketing efforts in Panchkula District. Moreover, the study contributes to the existing literature on tourism geography by providing a comprehensive understanding of the tourism potential and challenges in this specific region.*

Keywords: *tourism, Panchkula District, Haryana, geographical study, tourism resources, cultural heritage, sustainable tourism, community engagement.*

Objectives: By examining the demographic profile of Panchkula, we can pinpoint the inadequacies and factors that contribute to the district's tourism potential being underutilized and propose more proactive tourism initiatives that are appropriate for the local geography.

Study Area: Panchkula is a city located in the state of Haryana, India. It is a planned city that serves as the administrative headquarters of Panchkula district. Here's a geographical profile of Panchkula:

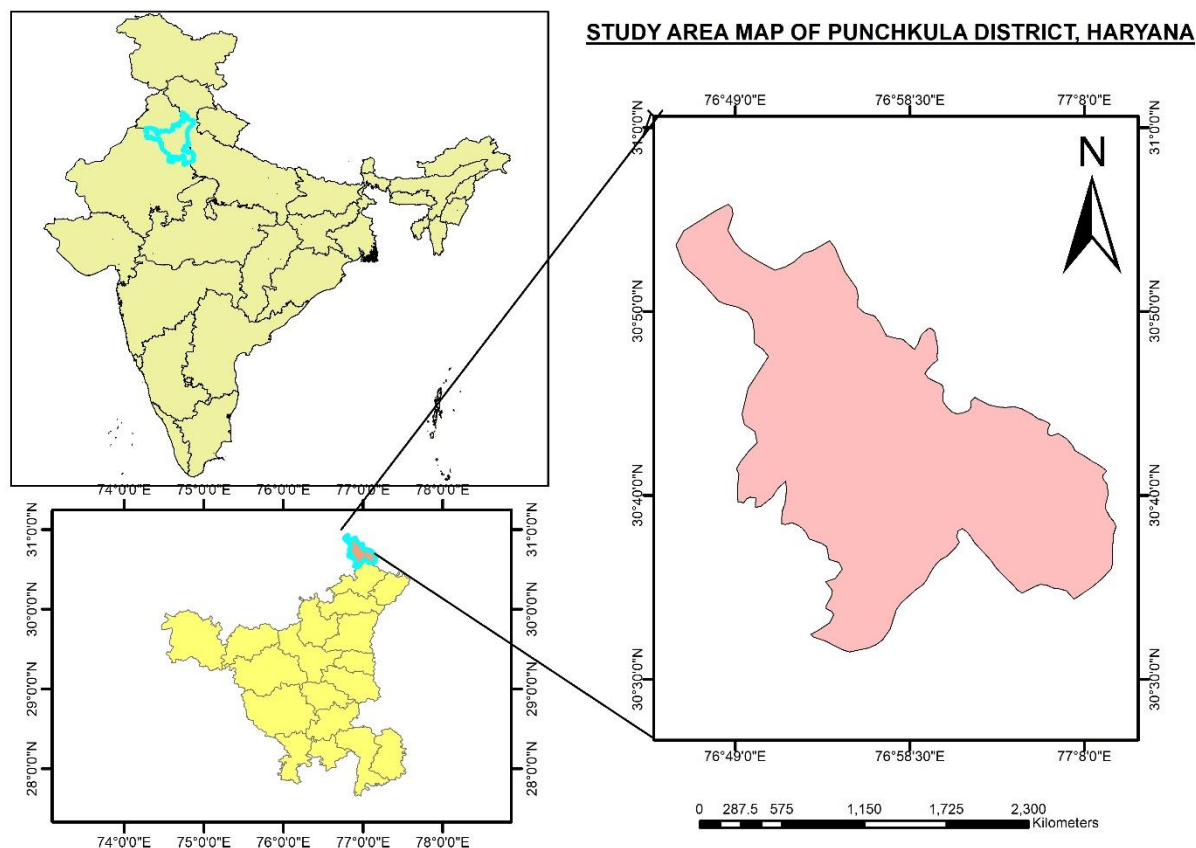
Location: Panchkula is situated in the northern part of India, in the foothills of the Shivalik range of the Himalayas. It lies approximately 11 kilometres away from Chandigarh, the joint capital of Punjab and Haryana.

Geographical Coordinates: Panchkula is located at approximately 30.6942° N latitude and 76.8606° E longitude.

Terrain: The city of Panchkula is characterized by a varied topography, with plains, hills, and forests. It is situated at an elevation ranging from 825 to 1,200 meters above sea level. The Shivalik Hills provide a picturesque backdrop to the city.

Rivers and Drainage: The Ghaggar River, also known as the Tengri River, flows through Panchkula. It is a seasonal river that originates in the Shivalik Hills and runs through the northern part of the city. Other small seasonal streams and nullahs (drainage channels) also traverse the region.

Climate: Panchkula experiences a subtropical continental climate. Summers (April to June) are hot, with temperatures ranging from 35°C to 45°C (95°F to 113°F). Winters (December to February) are cold, with temperatures dropping to as low as 2°C (36°F). The monsoon season (July to September) brings moderate to heavy rainfall.



Vegetation: Panchkula is known for its lush greenery, thanks to its location near the Shivalik Hills. The region is home to a variety of flora, including deciduous and evergreen trees. The surrounding areas have patches of forests, consisting of species like sal, Sheesham, eucalyptus, and bamboo.

Neighboring Areas: Panchkula shares its borders with several districts and cities in Haryana and Punjab. It is bordered by the districts of Ambala and Mohali, as well as the Union Territory of Chandigarh. These close geographical links have led to significant interconnectivity and economic integration.

Development: Panchkula is a planned city with a well-organized layout. It is divided into sectors, each with its own commercial, residential, and institutional areas. The city has seen rapid urbanization and infrastructural development over the years, with modern amenities and facilities.

Tourism: Panchkula attracts tourists due to its natural beauty and religious significance. It is home to several popular tourist destinations, including the Morni Hills, Pinjore Gardens, Cactus Gardens, Nada Sahib Gurudwara, and Mansa Devi Temple. The city also hosts various cultural and sports events.

Overall, Panchkula offers a blend of natural beauty, urban development, and cultural heritage. Its geographical features, including the Shivalik Hills and the Ghaggar River, contribute to its scenic charm and make it a noteworthy destination in the region.

Hypothesis:

1. Tourism naturally has a favorable impact on the employment, education, health, infrastructure, and economic profile of the local area.

2. The tourism industry's supply chain maintains vigorous economic activity both locally and nearby.
3. Greater understanding across various cultures is facilitated by exposure to fresh ideas and friendly interactions between visitors and the local host population.

Research Methodology: The research employs a mixed-method approach, combining qualitative and quantitative techniques. Data is collected through field surveys, interviews with residents and tourism stakeholders, and analysis of secondary sources such as government reports, tourism statistics, and scholarly articles. Based on the analysis, the study suggests potential strategies for sustainable tourism development in Panchkula District. These strategies include infrastructure improvements, conservation of natural and cultural resources, community engagement, and the promotion of responsible tourism practices.

The outcomes of this geographical study provide valuable insights for policymakers, tourism authorities, and local communities to enhance tourism planning, management, and marketing efforts in Panchkula District. Moreover, the study contributes to the existing literature on tourism geography by providing a comprehensive understanding of the tourism potential and challenges in this specific region.

Remarks and Determinations: The information gathered, taken in, and evaluated demonstrates the relationship and significance of tourism and its impact, which is primarily positive, though it can also be detrimental, albeit minimally, on the geographic profile of the area. based on the information Ecotourism, Rural tourism, Heritage tourism, Spiritual tourism, and Adventure tourism were discovered to be appropriate and positively possible for the area during the course of this study. The concerns that persist include, among others, issues with connectivity, lack of infrastructure, law, and order, social logic boarding and housing, and other issues.

Panchkula is a district located in the northern Indian state of Haryana. It is situated adjacent to the Union Territory of Chandigarh and is part of the Chandigarh Tricity region. Panchkula offers a combination of natural beauty, historical significance, and modern attractions, making it an interesting destination for tourists. Here are some key observations and findings about tourism in Panchkula District:

1. Morni Hills:

Morni Hills is a picturesque hill station located in the district of Panchkula, in the Indian state of Haryana. It is situated at an elevation of approximately 1,220 meters (4,000 feet) above sea level and is known for its serene natural beauty. Here's a brief overview of Morni Hills:

- **Location:** Morni Hills is situated about 45 kilometers (28 miles) away from the city of Chandigarh, making it a popular weekend getaway for residents of Chandigarh, Panchkula, and nearby areas.
- **Natural Beauty:** The hill station is known for its lush greenery, dense forests, and scenic landscapes. It is surrounded by the Shivalik Range of the Himalayas, offering breathtaking views of the mountains, valleys, and forests.
- **Morni Fort:** One of the major attractions in Morni Hills is the Morni Fort, also known as the Tikkar Fort. It is a historic structure built in the 17th century and offers panoramic views of the surrounding areas.
- **Trekking and Hiking:** Morni Hills is a paradise for nature enthusiasts and adventure seekers. The region offers several trekking and hiking trails that take you through the beautiful countryside, dense forests, and quaint villages.
- **Tikkar Taal:** Another prominent attraction in Morni Hills is Tikkar Taal, a serene lake located amidst the hills. It is a popular spot for picnics, boating, and fishing. The lake is surrounded by a well-maintained garden, making it an ideal place to relax and enjoy nature.

- **Wildlife Sanctuary:** Morni Hills is home to the Morni Hills Wildlife Sanctuary, spread over an area of approximately 25 square kilometers (10 square miles). The sanctuary is known for its rich biodiversity and is home to several species of animals and birds, including deer, peacocks, and various migratory birds.
- **Accommodation and Facilities:** There are a few accommodation options available in Morni Hills, including resorts and guesthouses. The hill station also has a few restaurants and small shops that cater to the needs of visitors.

Morni Hills offers a peaceful retreat amidst nature and is a popular destination for nature lovers, adventure enthusiasts, and those seeking a break from city life. Whether you're interested in scenic beauty, outdoor activities, or simply relaxing in a serene environment, Morni Hills has something to offer.

2. Pinjore Garden:

Pinjore Gardens, also known as Yadavindra Gardens, is a historic garden located in Pinjore, near Panchkula, Haryana, India. It is a popular tourist destination known for its Mughal-style garden design, beautiful landscapes, and historical significance. Here's a brief overview of Pinjore Gardens:

- **History:** Pinjore Gardens were built during the 17th century by the architect Nawab Fidal Khan, under the patronage of Aurangzeb, the Mughal emperor. The garden was initially named "Yadavindra Gardens" in honor of Maharaja Yadavindra Singh of the princely state of Patiala.
- **Layout and Design:** The gardens cover an area of approximately 100 acres and are designed in the Persian-Mughal style. The layout consists of seven terraces, each representing a different theme and adorned with fountains, pavilions, and lush greenery. The central canal with cascades and water jets adds to the beauty of the garden.
- **Terraces and Attractions:** The terraces of Pinjore Gardens have distinct features and attractions. The first terrace features an open-air theater where cultural performances are held. The second terrace has beautiful lawns and flower beds. The third terrace includes a magnificent palace known as the "Shish Mahal" or the Palace of Glass, featuring intricate mirror work.
- **Other Features:** The gardens also house a mini zoo, which is a favorite among children and families. It houses various animals and birds, providing an opportunity for visitors to get close to nature. Additionally, there are picnic spots, a Japanese garden, a historic temple, and several refreshing water bodies within the premises.
- **Festivals and Events:** Pinjore Gardens hosts various festivals and events throughout the year. The most famous event is the annual Pinjore Heritage Festival, which showcases the rich cultural heritage of the region through performances, exhibitions, and traditional crafts.
- **Accessibility:** Pinjore Gardens are easily accessible from Panchkula, Chandigarh, and other nearby cities. It is located approximately 20 kilometers from Chandigarh, making it a popular day trip destination for locals and tourists.

Visiting Pinjore Gardens offers a serene and visually captivating experience, combining history, nature, and architecture. Pinjore Gardens is a must-visit destination in Panchkula, Haryana.

3. Cactus Garden:

Panchkula is home to the National Cactus and Succulent Botanical Garden and Research Centre. Spread over an extensive area, this garden houses a diverse collection of cacti and succulent plants from around the world. It is a unique attraction for plant enthusiasts.

The cactus garden in Panchkula is known for its diverse collection of cacti and succulent plants. It serves as a popular tourist attraction and a haven for plant enthusiasts. The garden provides a serene environment where visitors can explore and learn about different types of cacti, their unique characteristics, and their natural habitats.

The garden is meticulously designed and landscaped to mimic the natural settings in which cacti thrive. It features well-arranged pathways that guide visitors through various sections of the garden, showcasing different varieties of cacti from around the world. The plants are organized based on their size, shape, and distinct features, allowing visitors to observe and appreciate their beauty up close. The garden also provides educational resources, such as informative signage and guided tours, to enhance visitors' knowledge about cacti and their ecological importance. These resources may highlight the adaptations of cacti to arid environments, their unique water storage capabilities, and their role in sustaining various ecosystems.

Besides being a visual treat for nature lovers, the cactus garden in Panchkula often serves as a venue for horticultural events, exhibitions, and workshops. It promotes awareness and conservation efforts related to cacti and their habitats, encouraging visitors to develop a deeper appreciation for the delicate balance of nature.

In summary, the cactus garden in Panchkula is a well-maintained and diverse collection of cacti and succulent plants, offering visitors an opportunity to explore and learn about these unique plant species. It serves as a scenic and educational destination for nature enthusiasts, promoting conservation and awareness of cacti's ecological significance.

4. Historical and Religious Sites:

Panchkula District also boasts several historical and religious sites that attract tourists. The Mansa Devi Temple, dedicated to Goddess Mansa Devi, and the Nada Sahib Gurudwara, a revered Sikh shrine, are popular pilgrimage destinations. Other notable sites include the remains of an ancient fort called Prithviraj ki Kutchery and the Kaushalya Dam.

5. Adventure and Sports:

Adventure seekers can indulge in various activities in Panchkula. There are options for paragliding and trekking in the scenic hills. Additionally, the Panchkula Golf Club offers opportunities for golf enthusiasts. Here are some adventure and sports activities you can enjoy in Panchkula:

- **Paragliding:** Panchkula boasts beautiful landscapes and suitable conditions for paragliding. You can soar through the sky and enjoy breathtaking views of the surrounding areas.
- **Trekking:** The nearby Shivalik Hills provide excellent opportunities for trekking. You can explore the scenic trails and immerse yourself in the natural beauty of the region.
- **Rock Climbing:** Adventure seekers can try their hand at rock climbing in Panchkula. There are designated rock climbing sites where you can test your skills and conquer the rugged terrain.
- **Golfing:** Panchkula is home to several golf courses that offer a serene and picturesque setting. You can indulge in a game of golf and enjoy the lush green surroundings.
- **Cycling:** Panchkula has well-maintained cycling tracks that cater to cycling enthusiasts. You can rent a bicycle and pedal your way through the city or explore the scenic countryside.
- **Water Sports:** If you're looking for water-based adventures, head to the nearby Sukhna Lake. You can indulge in activities like boating, kayaking, and canoeing, and enjoy the serene waters.
- **Horse Riding:** Experience the joy of horse riding in Panchkula. Several equestrian clubs and resorts offer horse riding facilities, allowing you to explore picturesque landscapes on horseback.

- **Adventure Parks:** Panchkula has adventure parks that offer a range of thrilling activities such as zip-lining, rope courses, and obstacle challenges. These parks are ideal for families and groups seeking adrenaline-pumping adventures.
- **Martial Arts Training:** Panchkula has martial arts academies where you can learn various disciplines like karate, taekwondo, and kickboxing. These classes provide an excellent opportunity to enhance your fitness and self-defense skills.
- **Yoga and Meditation Retreats:** If you're looking for a more serene and introspective experience, Panchkula has several yoga and meditation retreats. You can immerse yourself in holistic practices, rejuvenate your mind and body, and find inner peace.

6. Proximity to Chandigarh:

Panchkula's proximity to Chandigarh, the joint capital of Punjab and Haryana, makes it an accessible destination for tourists visiting the region. Many tourists often explore Panchkula as part of their itinerary when visiting Chandigarh.

7. Infrastructure and Accommodation:

Panchkula has developed its tourism infrastructure over the years. The district offers a range of accommodation options, including hotels, resorts, and guesthouses, catering to different budgets. The development of tourism infrastructure has improved in recent years, ensuring a comfortable stay for visitors.

8. Accessibility:

Panchkula District is well-connected by road, rail, and air transport. The nearest airport is Chandigarh International Airport, which provides domestic and international flight connectivity. The district also has good road connectivity, making it easily accessible from neighboring cities and states.

9. Potential for Growth:

While Panchkula District has several tourist attractions, there is potential for further growth and development. The district administration, in collaboration with tourism authorities, can focus on promoting the region's unique offerings, improving infrastructure, and organizing cultural events to attract more tourists. In terms of accessibility, Panchkula District is well-connected by road and rail networks. The Chandigarh International Airport is the nearest, ensuring easy access for domestic and international tourists.

Overall, Panchkula District in Haryana offers a mix of natural beauty, historical significance, and cultural richness, making it an attractive destination for tourists seeking a memorable and enriching experience.

Conclusion:

The geographical study of tourism in Panchkula District, Haryana reveals several key findings. Panchkula, located in the foothills of the Shivalik Range, offers a unique blend of natural beauty, historical significance, and cultural heritage. The district's favorable geographical features, including the presence of the Ghaggar River and the proximity to the Himalayan foothills, contribute to its tourism potential. The geographical study emphasizes the need for infrastructure development and promotion of Panchkula's tourism potential. Improving connectivity, creating accommodation options, and enhancing visitor amenities are crucial to cater to the growing demand of tourists. Collaboration between the government, local communities, and private stakeholders can help in sustainable tourism development and the preservation of Panchkula's natural and cultural heritage.

Overall, the geographical study highlights Panchkula District, Haryana, as a promising tourism destination with its scenic landscapes, historical sites, and cultural richness. By harnessing its geographical advantages and implementing strategic measures, Panchkula has the potential to become a sought-after tourist hotspot in the region.

References

1. UNWTO definition for Tourism, Understanding Tourism: Basic Glossary, 2005.
2. The British Ecotourism Market, UNWTO 2002 (<http://sdt.unwto.org/content/ecotourism-and-protected-areas>)
3. censusindia.gov.in report document, office of the Registrar General, 2011.
4. India: Employment and Unemployment, NSSO 68th round document, June 2011
5. Statistical Abstract for Roads in Haryana, 2016, PWD Dept. Haryana report
6. Statistical Abstract of Haryana 2016-17, by Department of Economic and Statistical Analysis, Government of Haryana.
7. The Times of India newspaper, June 09, 2018, Delhi edition, pp3. (<https://timesofindia.indiatimes.com/business/india-business/south-haryana-heritage-circuit-to-be-developed-as-global-tourist-destination-minister/article-show/64518537.cms>)
8. <http://haryanaturism.gov.in/home> - Yojana Tourism
9. Sunrise Industry, Edition May 2015 - Haryana - Publicity Bulletin, Nov 1994, produced by Director, Public Relations, Govt of Haryana.
10. Haryana - Do you know? Published by DPR, Haryana, and printed at Haryana Government Press, Panchkula.
11. Geography Of Tourism Hall C.M. University of Otago, Dunedin, New Zealand – Haryana
12. Publicity Bulletin, Nov 1994, produced by Director, Public Relations, Govt of Haryana.
13. Haryana - Do you know? Published by DPR, Haryana, and printed at Haryana Government Press, Panchkula.
14. Tourism Survey for the State Of Haryana (April 2011 – March 2012) Annual Report Submitted to: Ministry of Tourism (Market Research Division) Government of India By ACNielsen ORGMARG, 2012
15. Tourism Survey for the State Of Haryana (April 2011 – March 2012) Annual Report Submitted to: Ministry of Tourism (Market Research Division) Government of India By ACNielsen ORGMARG, 2

Websites

16. <https://haryanaturism.gov.in/>
17. <http://panchkula.nic.in/tourism.html>
18. <https://www.tripadvisor.com/>
19. <https://www.holidify.com/places/panchkula/>
20. <https://www.indiatravelblog.com/destinations/8-Panchkula-District.aspx>